

# Savitribai Phule Pune University - Central Instrumentation Facility

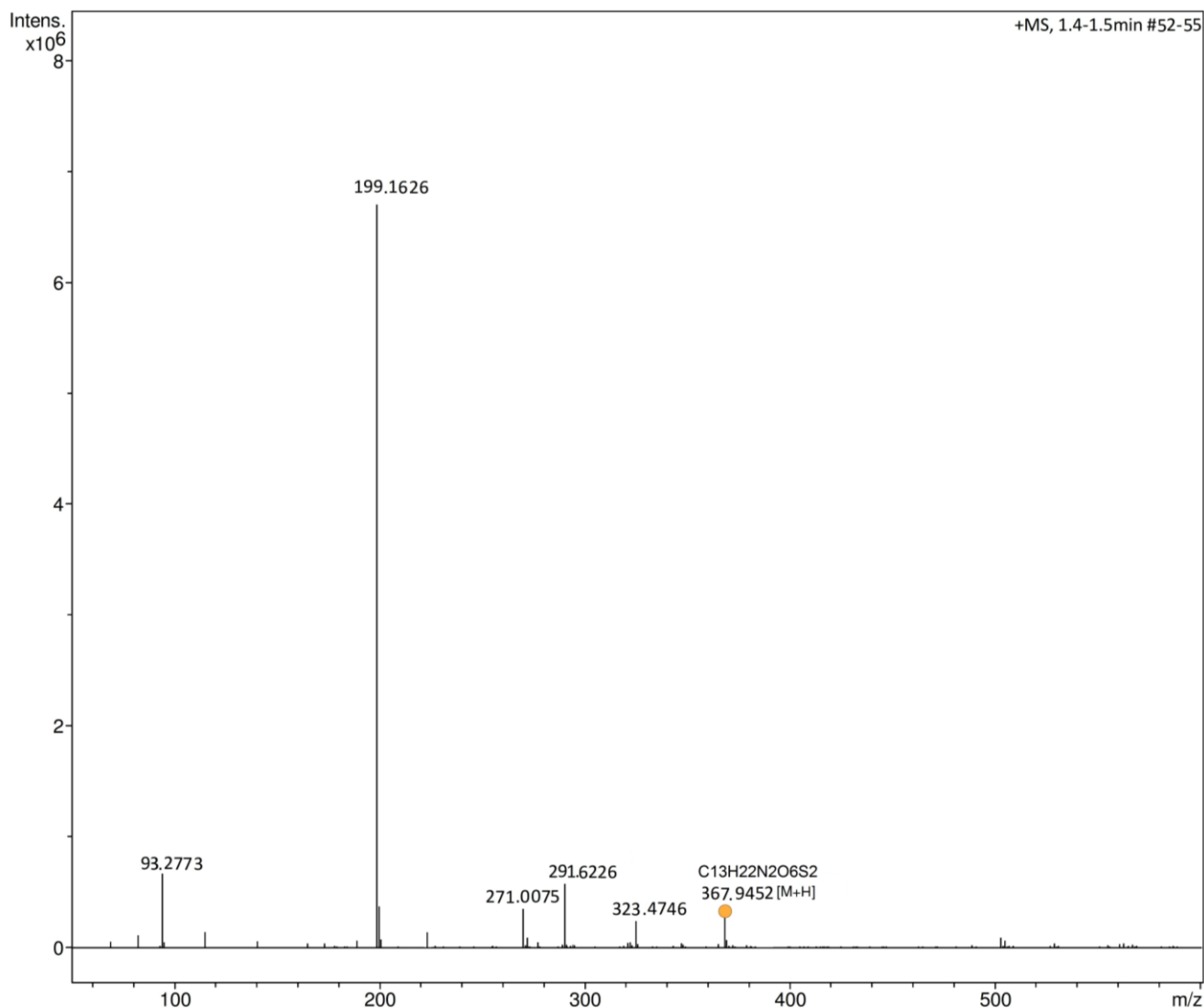
## Analysis Info

Analysis Name	D:\Data\2017\JUNE\SPPU AFFILIATED\SP COLLEGE, PUNE\PC MHASKE\ ACT_BC4_01_252.d
Method	dlc-ms600mz_10min.m
Sample Name	ACT
Comment	

Acquisition Date 7/5/2017 2:52:17 PM  
 Operator CIF  
 Instrument impact HD 1819699.81189

## Acquisition Parameter

Source Type	ESI	Ion Polarity	Positive	Set Nebulizer	1.7 Bar
Focus	Active	Set Capillary	4500 V	Set Dry Heater	200 °C
Scan Begin	50 m/z	Set End Plate Offset	-500 V	Set Dry Gas	7.0 l/min
Scan End	600 m/z	Set Charging Voltage	2000 V	Set Divert Valve	Waste
		Set Corona	0 nA	Set APCI Heater	0 °C



Meas. m/z	#	Ion Formula	Score	m/z	err [mDa]	err [ppm]	mSigma	rdb	e <sup>-</sup>	Conf	N-Rule	Adduct
367.94523	1	C <sub>13</sub> H <sub>22</sub> N <sub>2</sub> O <sub>6</sub> S <sub>2</sub>	100.00	367.94528	1.5	2.3	35.8	3.8	even		ok	M+H